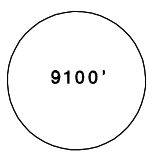
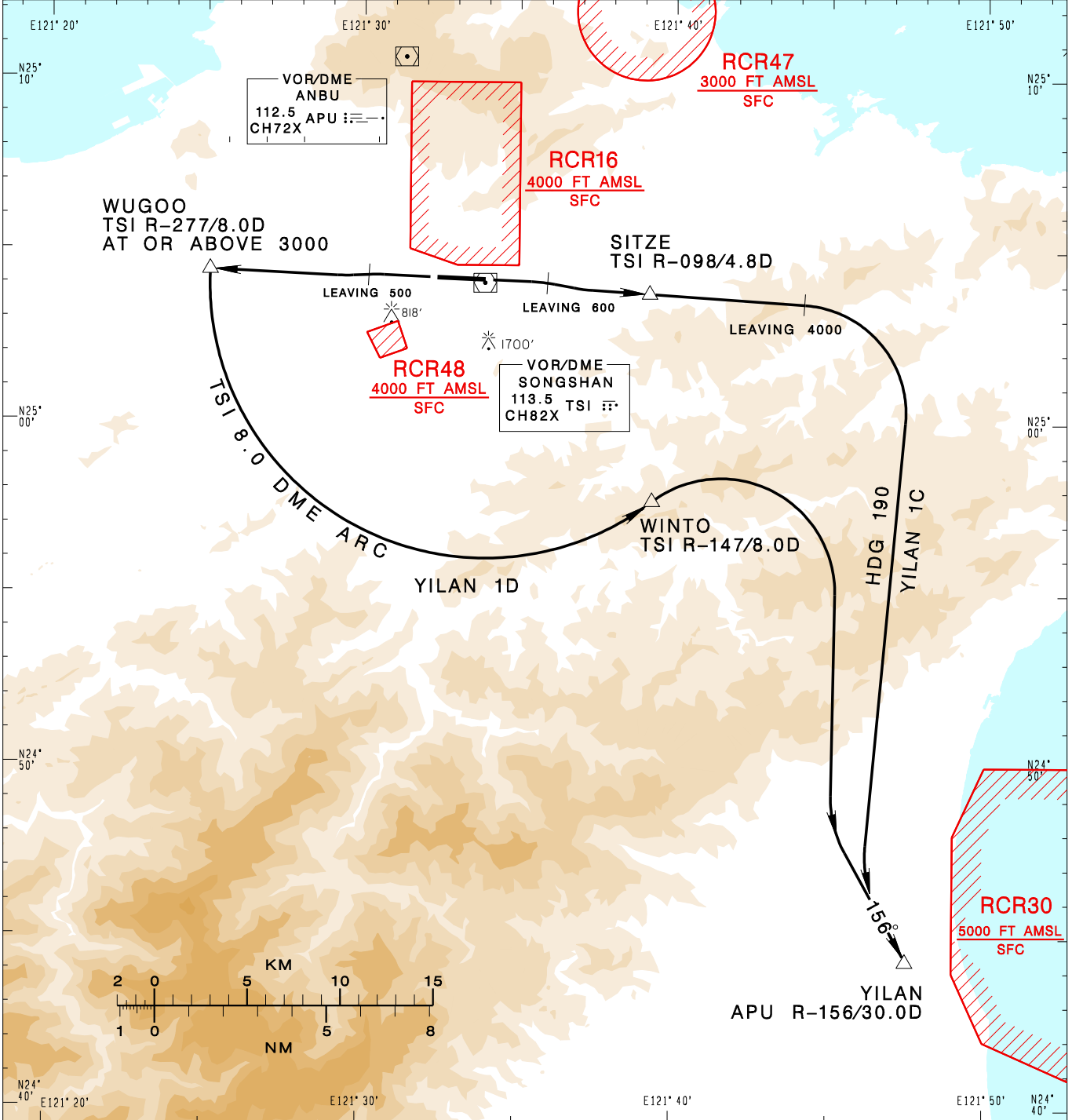


**臺北/松山機場**  
TAIPEI/SONGSHAN AD

RCSS SID  
YILAN 1C(RWY10)  
YILAN 1D(RWY28)

TAIPEI APP 119.7 119.6 125.1			SONGSHAN TWR 118.1		ATIS 127.4 341		VAR 5° W-2022	
Apt Elev: 18'		Trans Level: FL130		Trans Alt: 11,000'				
BEARINGS ARE MAGNETIC; DISTANCES ARE NAUTICAL MILES; ELEVATIONS, HEIGHTS IN FEET								



CHANGES: NEW CHART

**YILAN ONE CHARLIE DEPARTURE**  
Climb on RWY HDG until 600ft, then track TSI R-098 to SITZE, continue TSI R-098 until 4,000ft, then turn right HDG 190 to track APU R-156 to YILAN.

**YILAN ONE DELTA DEPARTURE**  
Climb on RWY HDG until 500ft, then track TSI R-277 to WUGOO, cross WUGOO at or above 3000ft, then turn left join TSI 8.0 DME arc to WINTO, then turn right to track APU R-156 to YILAN.

- NOTE**
1. YILAN 1C:  
Minimum climb gradient required: 7.0%(426ft/NM) until 4000ft.
  2. YILAN 1D:  
Minimum climb gradient required: 7.0%(426ft/NM) until WUGOO.
  3. ATS surveillance required.
  4. Caution high terrain around airport.
  5. A 1700ft-high BLDG at 2.1NM south of THR 28.
  6. A 818ft-high BLDG at 2 NM SW of THR 10.